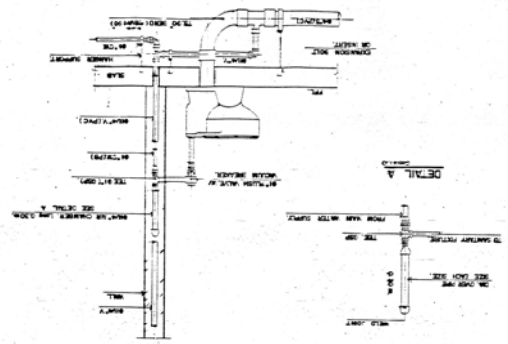


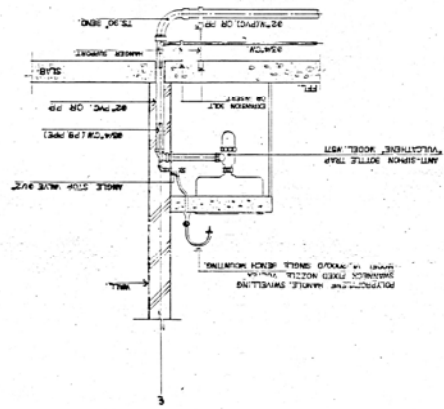


REV	DATE	BY	DESCRIPTION
1	07/15/57	...	...
2	08/20/57	...	...
3	09/10/57	...	...
4	10/05/57	...	...
5	11/15/57	...	...
6	12/20/57	...	...
7	01/10/58	...	...
8	02/05/58	...	...
9	03/15/58	...	...
10	04/20/58	...	...
11	05/10/58	...	...
12	06/05/58	...	...
13	07/15/58	...	...
14	08/20/58	...	...
15	09/10/58	...	...
16	10/05/58	...	...
17	11/15/58	...	...
18	12/20/58	...	...
19	01/10/59	...	...
20	02/05/59	...	...
21	03/15/59	...	...
22	04/20/59	...	...
23	05/10/59	...	...
24	06/05/59	...	...
25	07/15/59	...	...
26	08/20/59	...	...
27	09/10/59	...	...
28	10/05/59	...	...
29	11/15/59	...	...
30	12/20/59	...	...
31	01/10/60	...	...
32	02/05/60	...	...
33	03/15/60	...	...
34	04/20/60	...	...
35	05/10/60	...	...
36	06/05/60	...	...
37	07/15/60	...	...
38	08/20/60	...	...
39	09/10/60	...	...
40	10/05/60	...	...
41	11/15/60	...	...
42	12/20/60	...	...
43	01/10/61	...	...
44	02/05/61	...	...
45	03/15/61	...	...
46	04/20/61	...	...
47	05/10/61	...	...
48	06/05/61	...	...
49	07/15/61	...	...
50	08/20/61	...	...
51	09/10/61	...	...
52	10/05/61	...	...
53	11/15/61	...	...
54	12/20/61	...	...
55	01/10/62	...	...
56	02/05/62	...	...
57	03/15/62	...	...
58	04/20/62	...	...
59	05/10/62	...	...
60	06/05/62	...	...
61	07/15/62	...	...
62	08/20/62	...	...
63	09/10/62	...	...
64	10/05/62	...	...
65	11/15/62	...	...
66	12/20/62	...	...
67	01/10/63	...	...
68	02/05/63	...	...
69	03/15/63	...	...
70	04/20/63	...	...
71	05/10/63	...	...
72	06/05/63	...	...
73	07/15/63	...	...
74	08/20/63	...	...
75	09/10/63	...	...
76	10/05/63	...	...
77	11/15/63	...	...
78	12/20/63	...	...
79	01/10/64	...	...
80	02/05/64	...	...
81	03/15/64	...	...
82	04/20/64	...	...
83	05/10/64	...	...
84	06/05/64	...	...
85	07/15/64	...	...
86	08/20/64	...	...
87	09/10/64	...	...
88	10/05/64	...	...
89	11/15/64	...	...
90	12/20/64	...	...
91	01/10/65	...	...
92	02/05/65	...	...
93	03/15/65	...	...
94	04/20/65	...	...
95	05/10/65	...	...
96	06/05/65	...	...
97	07/15/65	...	...
98	08/20/65	...	...
99	09/10/65	...	...
100	10/05/65	...	...

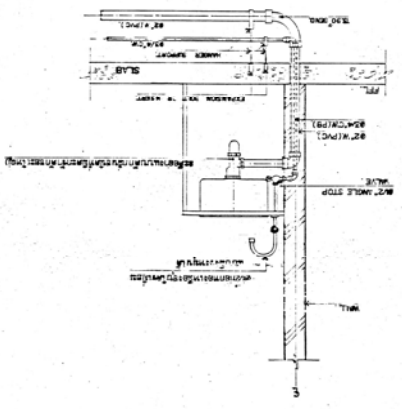
**WATER CLOSET**



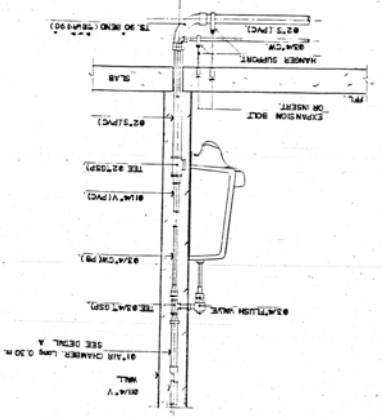
**LAB SINK**



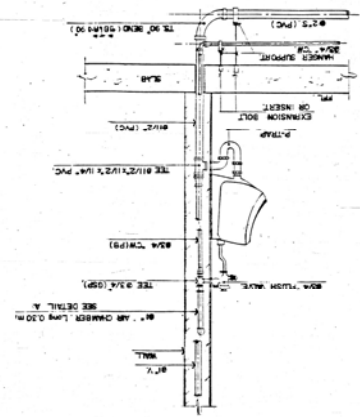
**SINK PANTRY ROOM**



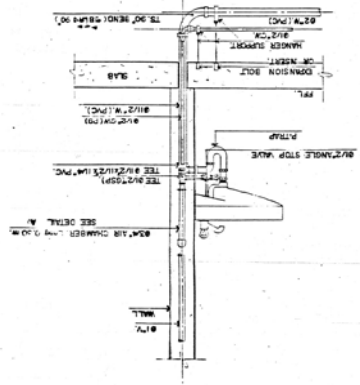
**URINAL**



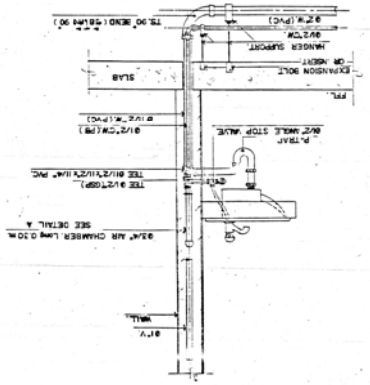
**URINAL**



**LAVATORY**



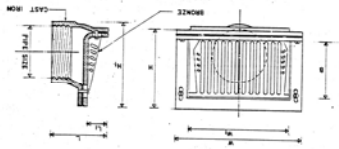
**LAVATORY**



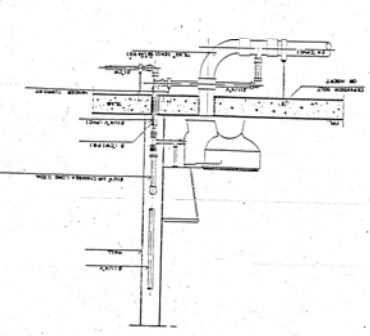
Model	8728
Part Number	8728
Material	Cast Iron
Finish	Black
Weight	1.57
Dimensions	1 1/2" x 1 1/2" x 1 1/2"
Notes	See drawing for details.

Size	Weight	Material	Finish
1 1/2"	1.57	Cast Iron	Black
2"	2.15	Cast Iron	Black
2 1/2"	2.73	Cast Iron	Black
3"	3.31	Cast Iron	Black
4"	3.89	Cast Iron	Black
5"	4.47	Cast Iron	Black
6"	5.05	Cast Iron	Black
8"	6.29	Cast Iron	Black
10"	7.53	Cast Iron	Black
12"	8.77	Cast Iron	Black

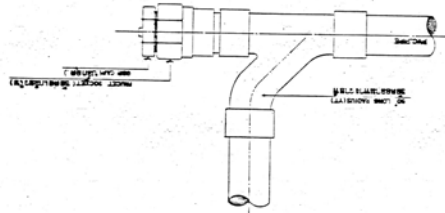
SCUPPER DRAIN



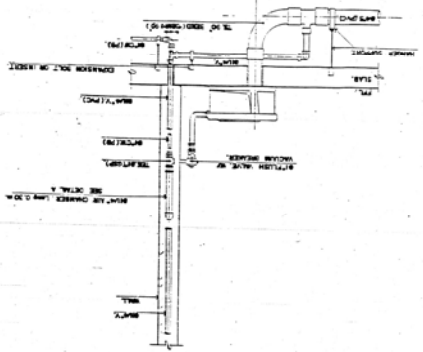
WATER CLOSET



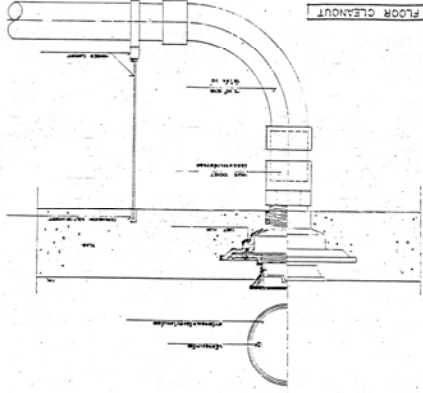
CLEANOUT



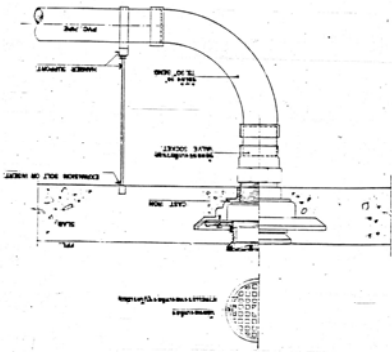
WATER CLOSET



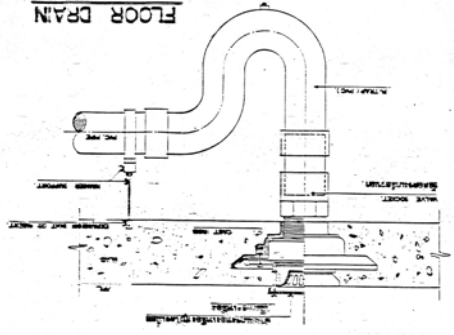
FLOOR CLEANOUT



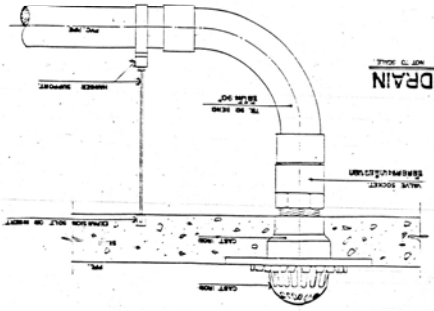
AREA DRAIN



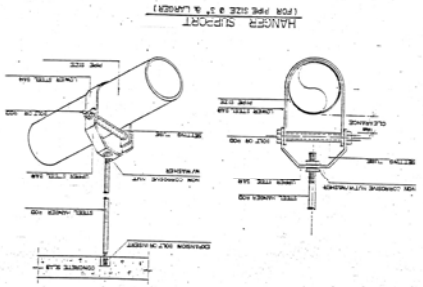
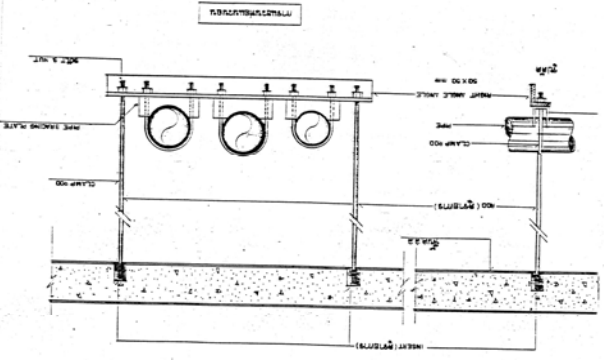
FLOOR DRAIN



ROOF DRAIN

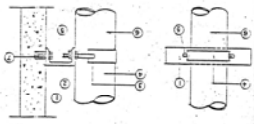


NO. 8728	REV. 1/57
DATE	BY
APPROVED	DESIGNED
CHECKED	CONTRACTOR
PROJECT	NO.
LOCATION	
DESCRIPTION	
REVISIONS	
1. CHANGE	
2. CHANGE	
3. CHANGE	
4. CHANGE	
5. CHANGE	
6. CHANGE	
7. CHANGE	
8. CHANGE	
9. CHANGE	
10. CHANGE	

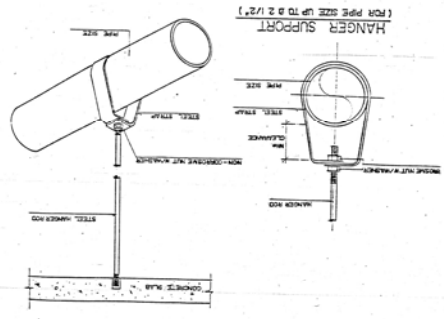
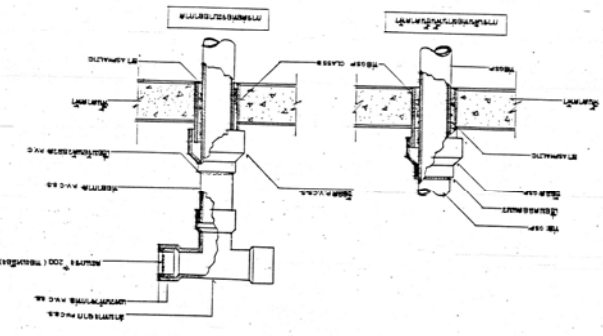
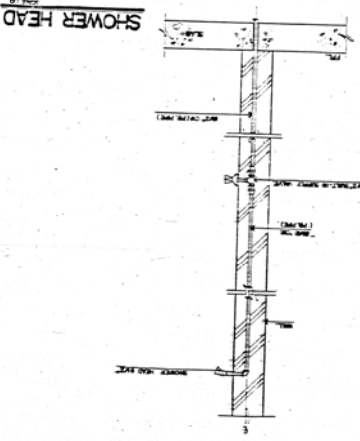


PIPE SIZE	HANGER ROD	STEEL STUD	CLAMP HOOD
1 1/2"	3/8"	1 1/2"	1 1/2"
2"	1/2"	2"	2"
2 1/2"	5/8"	2 1/2"	2 1/2"
3"	3/4"	3"	3"
3 1/2"	7/8"	3 1/2"	3 1/2"
4"	1"	4"	4"
4 1/2"	1 1/8"	4 1/2"	4 1/2"
5"	1 1/4"	5"	5"
5 1/2"	1 1/2"	5 1/2"	5 1/2"
6"	1 3/8"	6"	6"
6 1/2"	1 3/4"	6 1/2"	6 1/2"
7"	1 7/8"	7"	7"
7 1/2"	2"	7 1/2"	7 1/2"
8"	2 1/8"	8"	8"
8 1/2"	2 1/4"	8 1/2"	8 1/2"
9"	2 3/8"	9"	9"
9 1/2"	2 3/4"	9 1/2"	9 1/2"
10"	2 7/8"	10"	10"

SUPPORT FOR VERTICAL PIPE

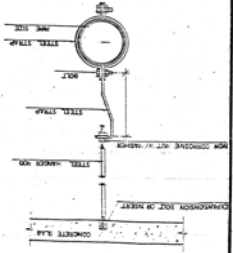


PIPE SIZE	HANGER ROD	STEEL STUD	CLAMP HOOD
1 1/2"	3/8"	1 1/2"	1 1/2"
2"	1/2"	2"	2"
2 1/2"	5/8"	2 1/2"	2 1/2"
3"	3/4"	3"	3"
3 1/2"	7/8"	3 1/2"	3 1/2"
4"	1"	4"	4"
4 1/2"	1 1/8"	4 1/2"	4 1/2"
5"	1 1/4"	5"	5"
5 1/2"	1 1/2"	5 1/2"	5 1/2"
6"	1 3/8"	6"	6"
6 1/2"	1 3/4"	6 1/2"	6 1/2"
7"	1 7/8"	7"	7"
7 1/2"	2"	7 1/2"	7 1/2"
8"	2 1/8"	8"	8"
8 1/2"	2 1/4"	8 1/2"	8 1/2"
9"	2 3/8"	9"	9"
9 1/2"	2 3/4"	9 1/2"	9 1/2"
10"	2 7/8"	10"	10"



PIPE SIZE	HANGER ROD	STEEL STUD	CLAMP HOOD
1 1/2"	3/8"	1 1/2"	1 1/2"
2"	1/2"	2"	2"
2 1/2"	5/8"	2 1/2"	2 1/2"
3"	3/4"	3"	3"
3 1/2"	7/8"	3 1/2"	3 1/2"
4"	1"	4"	4"
4 1/2"	1 1/8"	4 1/2"	4 1/2"
5"	1 1/4"	5"	5"
5 1/2"	1 1/2"	5 1/2"	5 1/2"
6"	1 3/8"	6"	6"
6 1/2"	1 3/4"	6 1/2"	6 1/2"
7"	1 7/8"	7"	7"
7 1/2"	2"	7 1/2"	7 1/2"
8"	2 1/8"	8"	8"
8 1/2"	2 1/4"	8 1/2"	8 1/2"
9"	2 3/8"	9"	9"
9 1/2"	2 3/4"	9 1/2"	9 1/2"
10"	2 7/8"	10"	10"

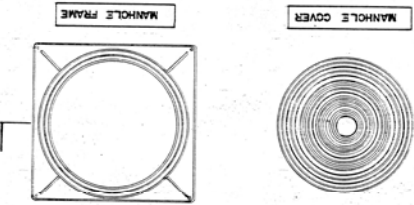
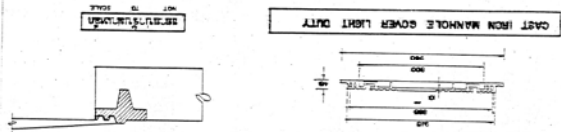
HANGER SUPPORT (FOR POLY BUTYLENE PIPE)



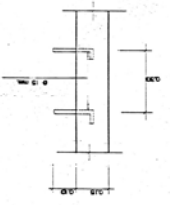
PIPE SIZE	HANGER ROD	STEEL STUD	CLAMP HOOD
1 1/2"	3/8"	1 1/2"	1 1/2"
2"	1/2"	2"	2"
2 1/2"	5/8"	2 1/2"	2 1/2"
3"	3/4"	3"	3"
3 1/2"	7/8"	3 1/2"	3 1/2"
4"	1"	4"	4"
4 1/2"	1 1/8"	4 1/2"	4 1/2"
5"	1 1/4"	5"	5"
5 1/2"	1 1/2"	5 1/2"	5 1/2"
6"	1 3/8"	6"	6"
6 1/2"	1 3/4"	6 1/2"	6 1/2"
7"	1 7/8"	7"	7"
7 1/2"	2"	7 1/2"	7 1/2"
8"	2 1/8"	8"	8"
8 1/2"	2 1/4"	8 1/2"	8 1/2"
9"	2 3/8"	9"	9"
9 1/2"	2 3/4"	9 1/2"	9 1/2"
10"	2 7/8"	10"	10"

- ① STEEL CHANNEL
- ② NON CORROSIVE WELD WALKER
- ③ WELD
- ④ STEEL STUD
- ⑤ THREADED ROD
- ⑥ PIPE SIZE
- ⑦ CLAMP HOOD OR NUT

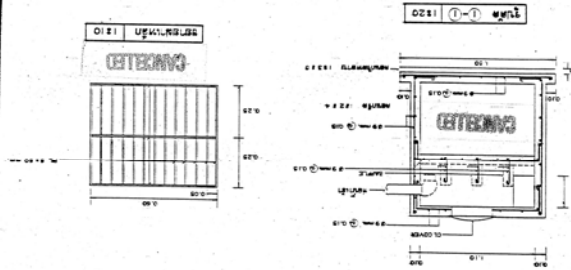
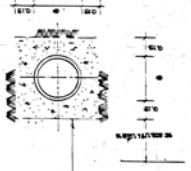
NO. 8728	DATE 1957	SCALE 1:20
PROJECT: <b>MANHOLE COVER LIGHT DUTY</b> DRAWING NO. <b>8728</b> DATE <b>1957</b> SCALE <b>1:20</b>		
DRAWING TITLE: <b>MANHOLE COVER LIGHT DUTY</b> PROJECT NO.: <b>8728</b> DATE: <b>1957</b> SCALE: <b>1:20</b>		
DRAWING NO. <b>8728</b> DATE <b>1957</b> SCALE <b>1:20</b>		



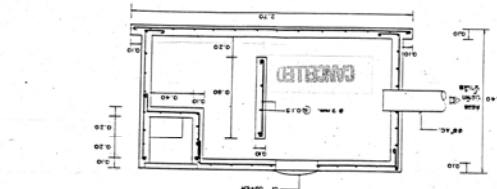
**RING DETAIL 1:10**



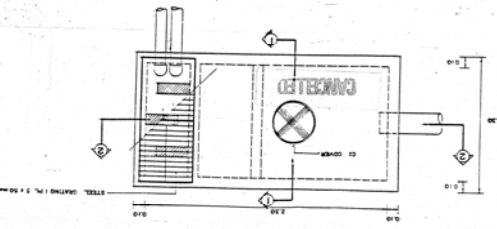
**DETAILS OF MANHOLE COVER**



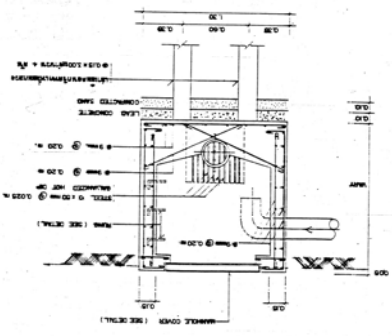
**MANHOLE COVER 1:20**



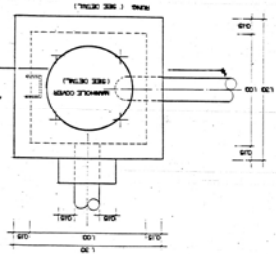
**MANHOLE COVER 1:20**



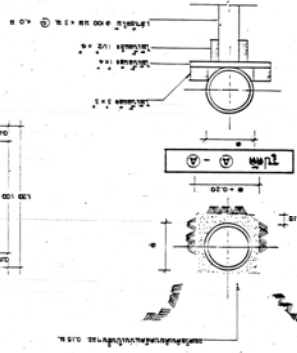
**SECTION A-A 1:20**



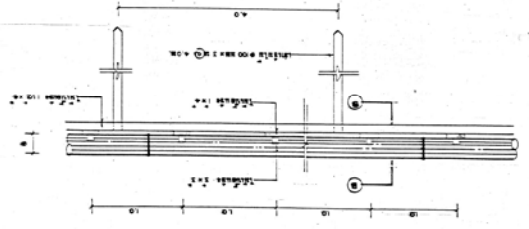
**MANHOLE PLAN 1:20**



**MANHOLE COVER 1:20**



**DETAILS OF MANHOLE COVER 2 TON/M**



**DETAILS OF MANHOLE COVER 2 TON/M**

